

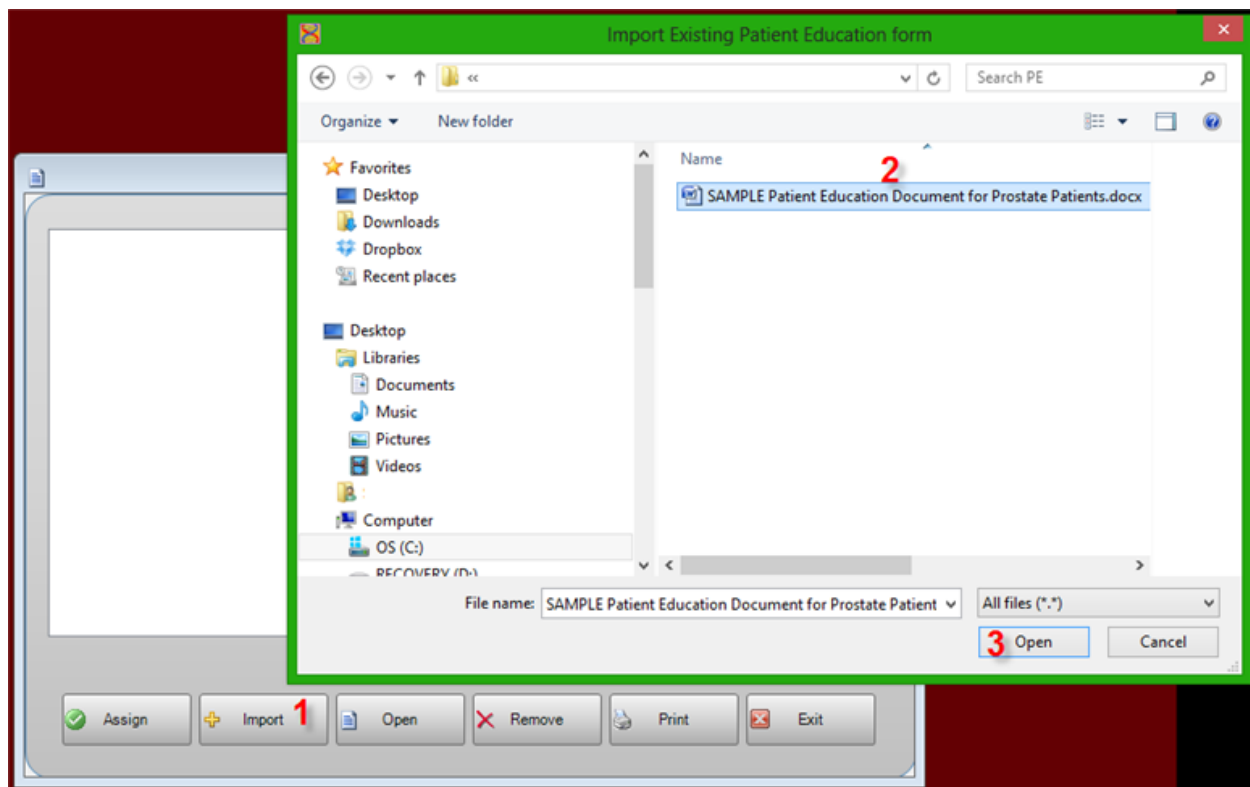
Patient Specific Education Resource

Patient-specific education resources identified by Certified EHR Technology are provided to more than 10% all unique patients seen by the EP during the EHR reporting period.

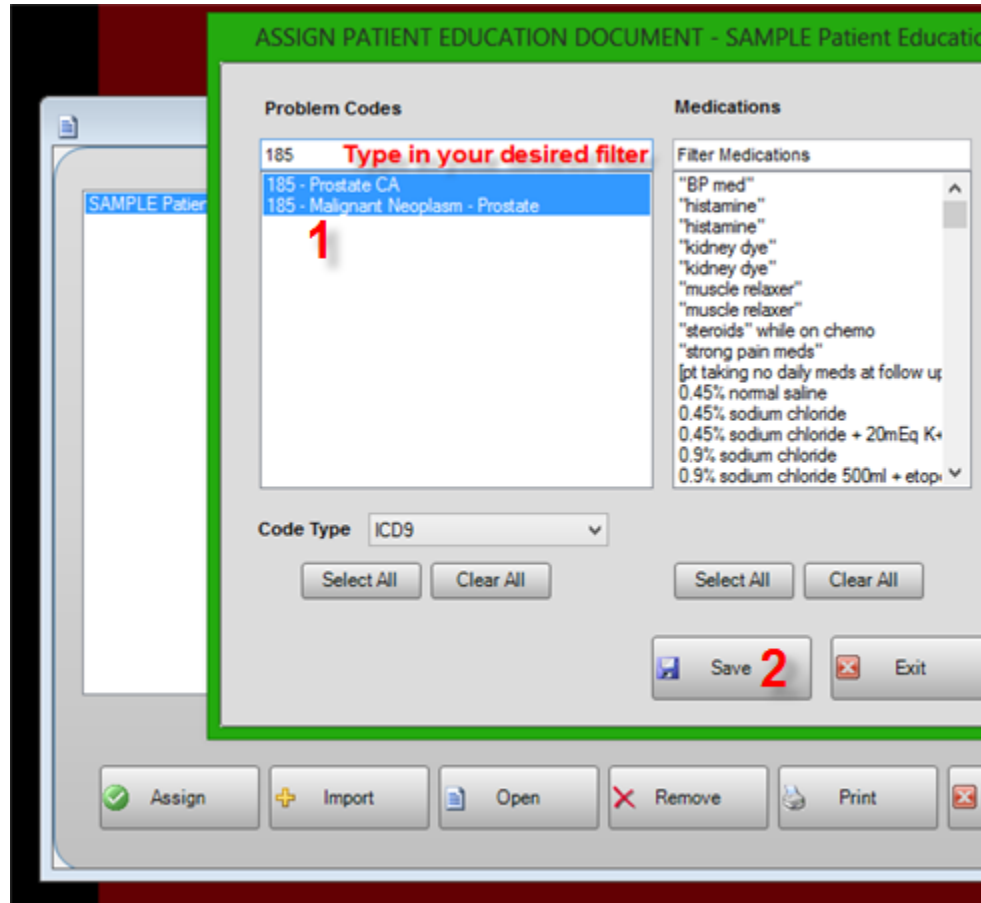
How to meet this measure using ONCOCHART -

Go to *Utilities > Patients > Patient Education Forms*.

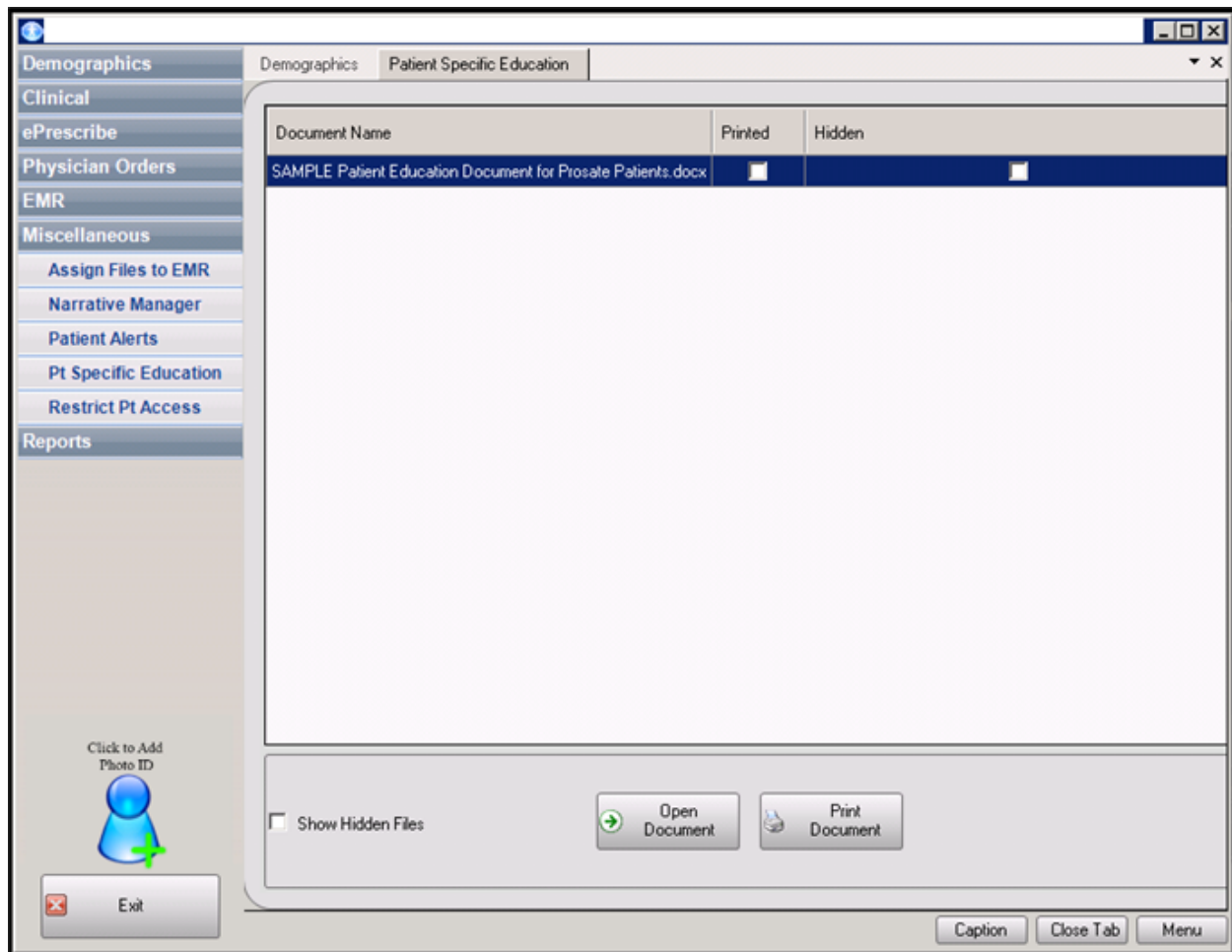
- Import your patient education documents into ONCOCHART by using the *Import* button.
- Navigate to the location of your document(s), select them, and then click *Open*. (You can select multiple documents by holding Ctrl and selecting the documents.)



- Click *Assign*, search for a problem code or medication based on ICD-9 or name.
- Select your code(s) or medication(s) then click *Save*.



Any patient that meets the specified criteria you chose will have the education documents located under *Miscellaneous > Pt Specific Education*. In order to receive credit, in ONCOCHART, for providing the education resource, you will have to *print* the document. Once the document has been printed, the *Printed* box checks.



The patient portal can also help you meet this measure as ONCOCHART will automatically send any education document(s) to patients who have authorized you to send them health information. *Contact ONCOCHART support for more information regarding the patient portal.*